

# Box Cottage



W  
WHITES



## Box Cottage, Middleton Road, Winterslow, Salisbury, Wiltshire SP5 1QJ

The property is a detached period cottage, with ample parking for several cars and a good sized garden, situated in this popular village.

- Period Cottage
- Three Reception Rooms
- Oil Central Heating
- Four Bedrooms
- Study
- Large Kitchen/Breakfast Room
- Driveway Parking
- Good Garden

**£650,000 Freehold**









## About The Property

A rare opportunity to buy a unique character cottage in the heart of the popular village of Winterslow, within an easy walk of local school, public house, shop/post office, village hall and sports ground. There are also great walks in the surrounding countryside including Bentley Wood. Offered in good order throughout, Box Cottage benefits from light and airy, good sized reception rooms including a study/home office, kitchen/breakfast room with French doors to the garden, 4 bedrooms, bathroom and en-suite shower room. There is oil central heating by radiators.

This is a deceptively spacious property which needs to be seen to be appreciated.

The cottage is entered via the entrance hall which has a door to the double aspect study and another door to the large double aspect sitting room with open fireplace and deep understairs cupboard. From here a door leads into the double aspect dining room from which is a staircase leading to the first floor. Completing the downstairs is a lovely

kitchen/breakfast room with an excellent range of work surfaces with base and wall mounted cupboards and drawers, range cooker with extractor hood over, oil fired boiler for central heating and hot water, space and plumbing for washing machine, butlers sink, tiled floor, built in dishwasher and French doors to the garden. Another door leads to the useful rear porch. On the first floor is a double aspect main bedroom with ensuite shower room and large walk in wardrobe, two further double bedrooms, single bedroom and good sized bathroom with free standing bath, hand basin and wc.

Outside there is driveway parking to the front for a number of vehicles which leads to a courtyard sitting area and then into the rear garden which is a good length with hedging to sides and wooden storage shed to rear.





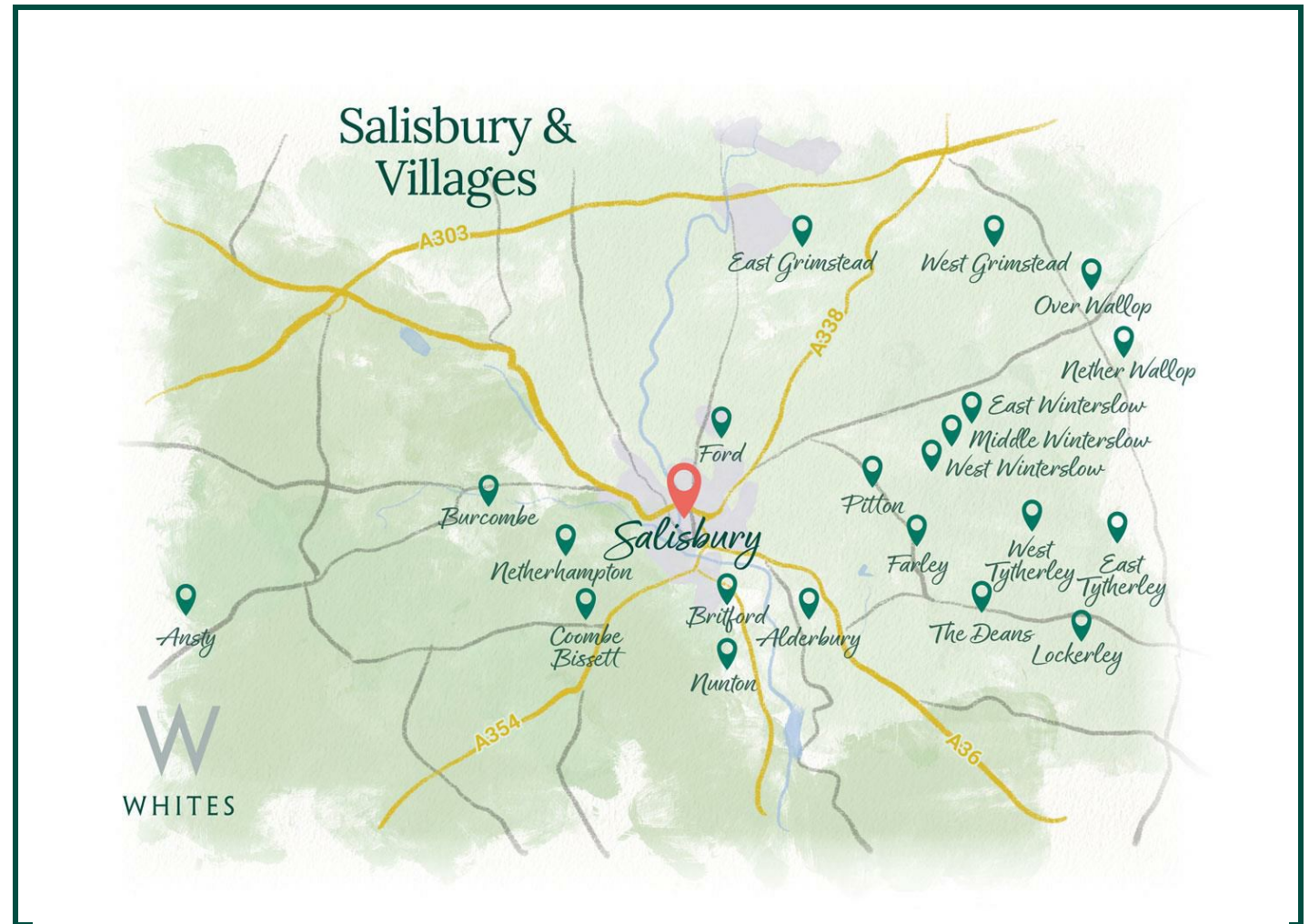


## Location

Winterslow is a civil parish located in southeastern Wiltshire, England, situated on the border with Hampshire. It lies about six miles northeast of the city of Salisbury on chalk hills, with the London to Stockbridge road (the A30) passing through the northern part of the parish.

The parish is composed of several settlements, primarily the villages of West Winterslow and Middle Winterslow, and the hamlets of East Winterslow and The Common. Historically, these were three separate manors mentioned in the Domesday Book of 1086, collectively known as "Wintreslei," which is believed to mean "Winter's mound or burial place."

The area is known for its rural character and has a rich history with evidence of prehistoric, Roman, and Saxon settlements. The Roman road between Old Sarum and Winchester passes through the parish, and remnants of ancient farms and cemeteries have been discovered.



Southampton Central: 30 mins  
Bath Spa: 1 hr  
London Waterloo: 1 hr 28 mins



Salisbury: 30 mins  
Bath: 1 hour 20 mins  
London: 2 hours 10 mins



Local school: 10 mins  
Local public house: 10 mins  
Local amenities: 5 mins

## Key Information

### Local Authority:

Wiltshire Council

### Council Tax:

Band: G - £3,930.07 (2025/2026)

### Tenure:

Freehold

### Floor Area:



1615.00 sq ft

### Services:

Mains Water and Electricity

### Heating:


Oil Fired Central Heating

### Directions:

From Salisbury take the A30 London Road and after about four miles turn right to Firsdow and Winterslow. Take the first turning left into The Plantation and continue into the village. Continue into Middleton and bear sharp right into Middleton Road. At the bottom of the hill turn left into The Causeway (unmade road) where Box Cottage is second on the right.

### EPC:

#### Energy Efficiency Rating

	Current	Potential
Very energy efficient - lower running costs		
(92 plus) <b>A</b>		
(81-91) <b>B</b>		
(69-80) <b>C</b>		
(55-68) <b>D</b>		
(39-54) <b>E</b>		
(21-38) <b>F</b>		
(1-20) <b>G</b>		
Not energy efficient - higher running costs		
<b>England &amp; Wales</b>		EU Directive 2002/91/EC 

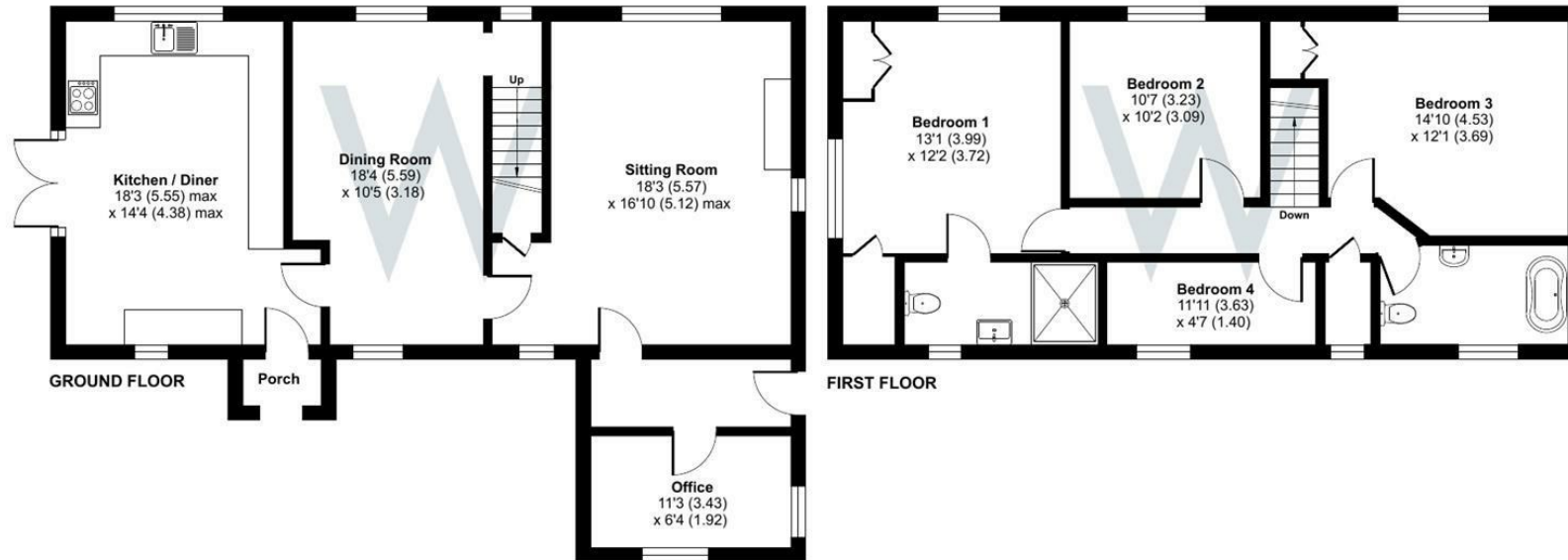
### What3Words:

///resolves.sharp.recording

# Middleton Road, Winterslow, Salisbury, SP5

Approximate Area = 1615 sq ft / 150 sq m

For identification only - Not to scale



Floor plan produced in accordance with RICS Property Measurement Standards incorporating International Property Measurement Standards (IPMS2 Residential). © ncheom 2025. Produced for H W White Ltd. REF: 1334098

